



# Service Performance Updates

May 21, 2026

# VRE Service in Virginia

## Fredericksburg Line

- Eight daily roundtrips
- Six daily deadheads

## Manassas Line

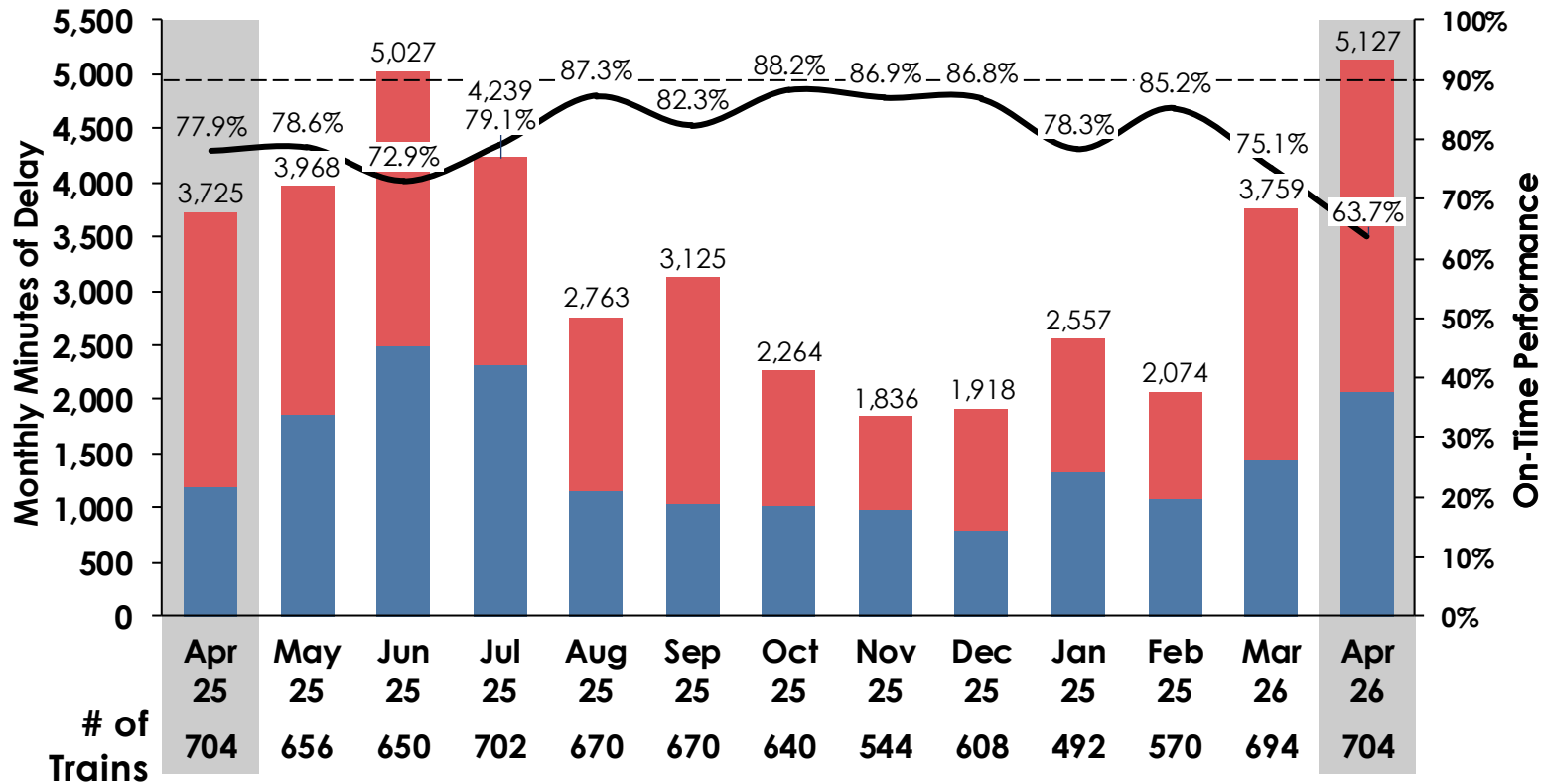
- Eight daily roundtrips
- Four daily deadheads



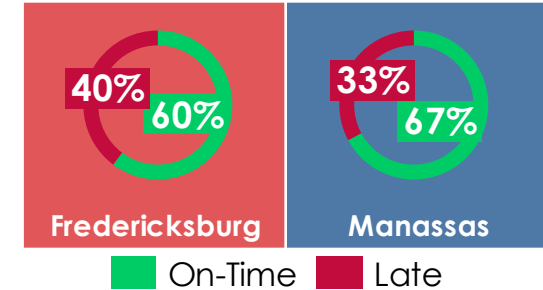
# VRE Performance

VRE On-Time Performance: trains arrive at last scheduled stop within 6 minutes of schedule

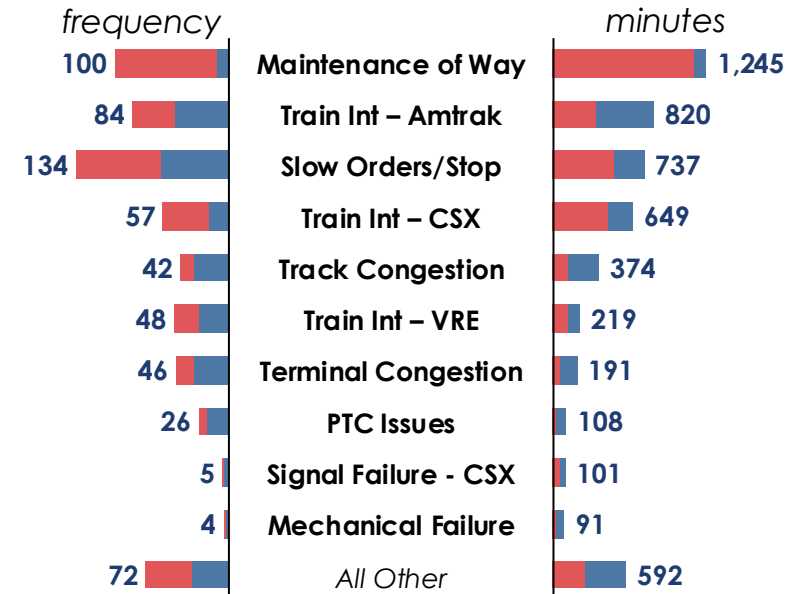
## VRE Last Station OTP and Delay Minutes



## Endpoint On-Time Performance, April 2026



## Top 10 Delays, April 2026



# Amtrak Service in Virginia post-January 12, 2026

## Amtrak Virginia



6 round-trips



2 Hampton Roads



2 Richmond

## Amtrak Long-Distance

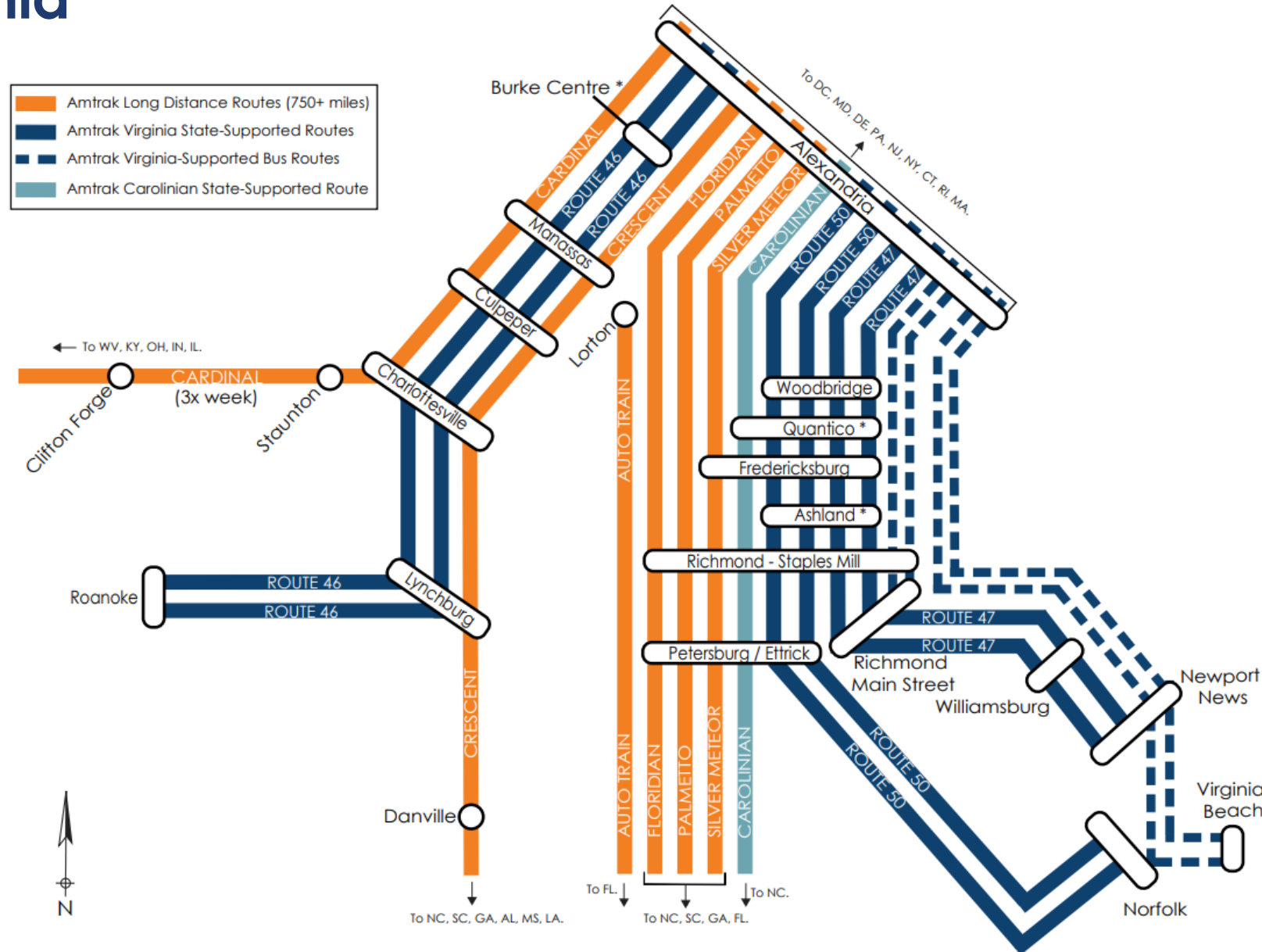


6 round-trips

## Carolinian



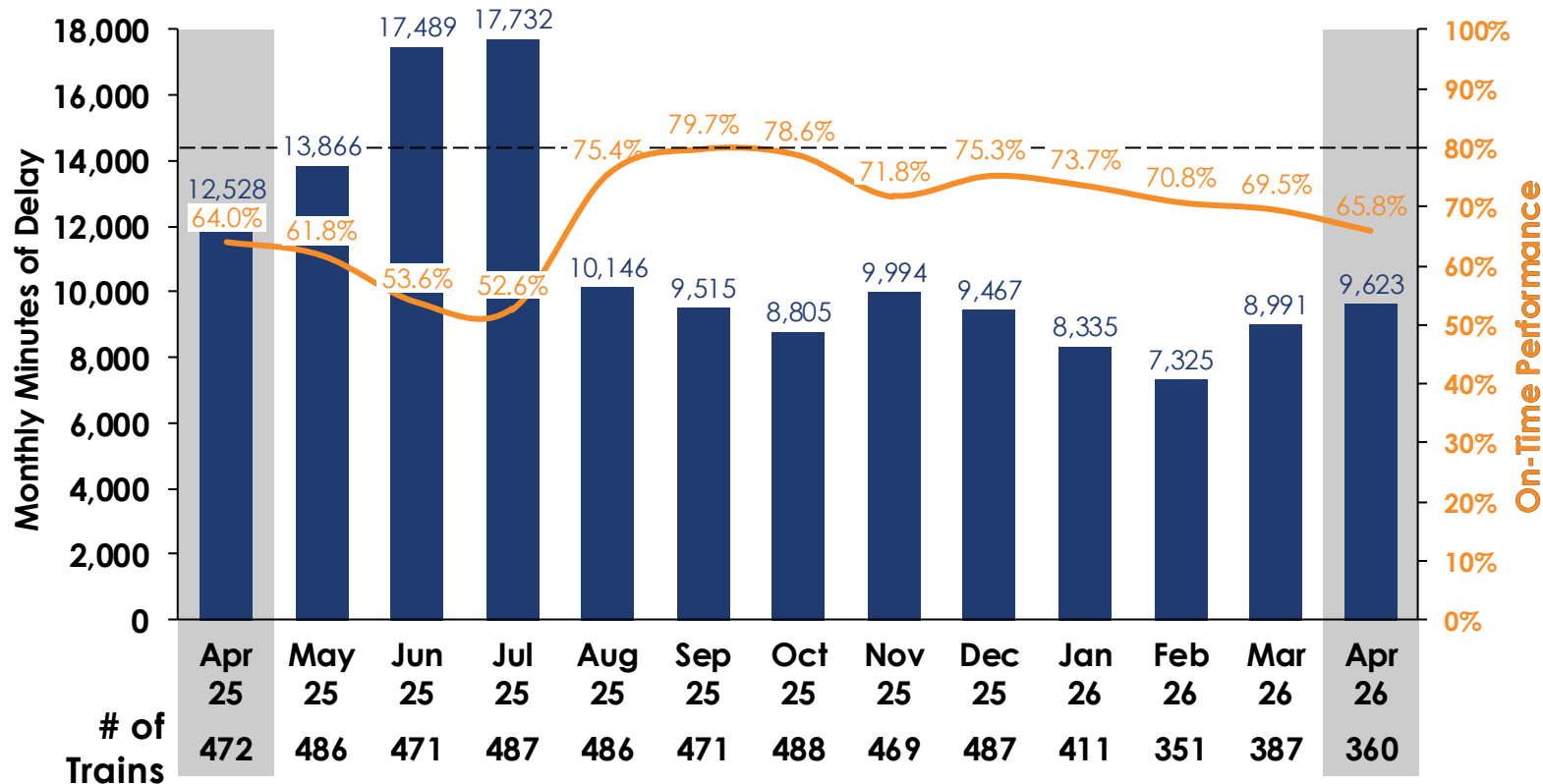
1 round-trip



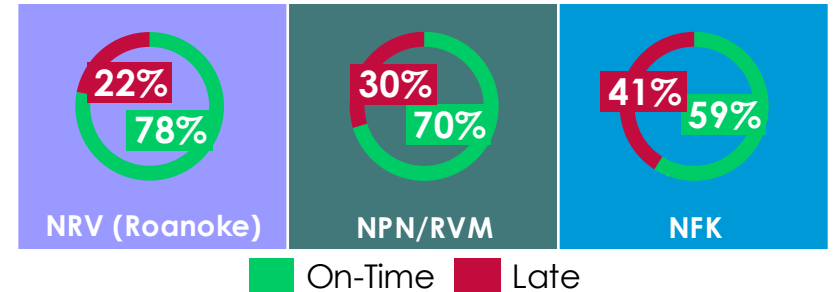
# Amtrak VA Performance

Amtrak On-Time Performance: trains arrive at scheduled stop within 15 minutes of schedule

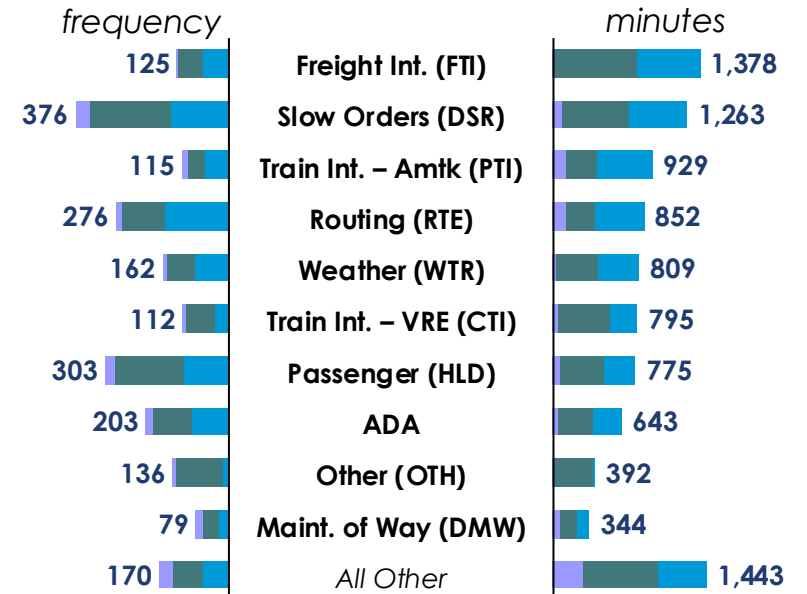
## NE Regional All-Station OTP v. Delay Minutes (RF&P Corridor Only)<sup>1,2,3</sup>



## All-Station<sup>1</sup> On-Time Performance, April 2026



## Top 10 Delays<sup>2</sup>, April 2026



(1) OTP excludes OTP on NS Roanoke Corridor. (2) Delay minutes exclude NOD and all delays on NS.

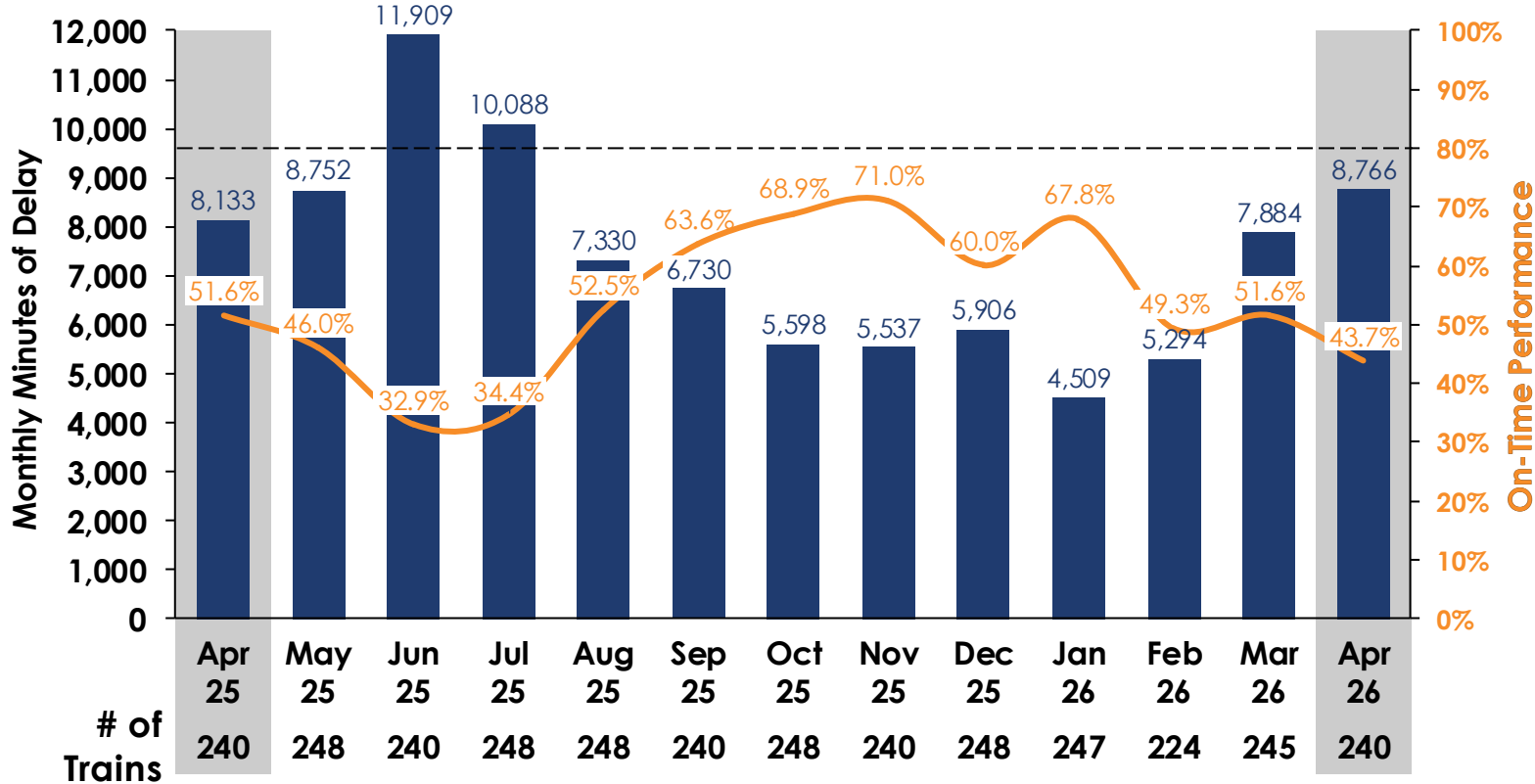
(3) Trains 65 and 67 are shown based on the day they operated in Virginia.



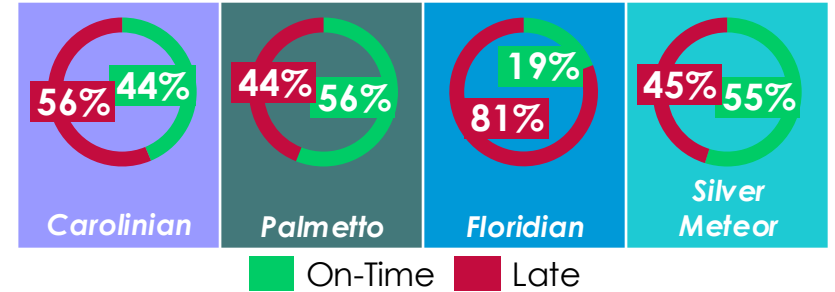
# Long Distance Performance

Amtrak On-Time Performance: trains arrive at scheduled stop within 15 minutes of schedule

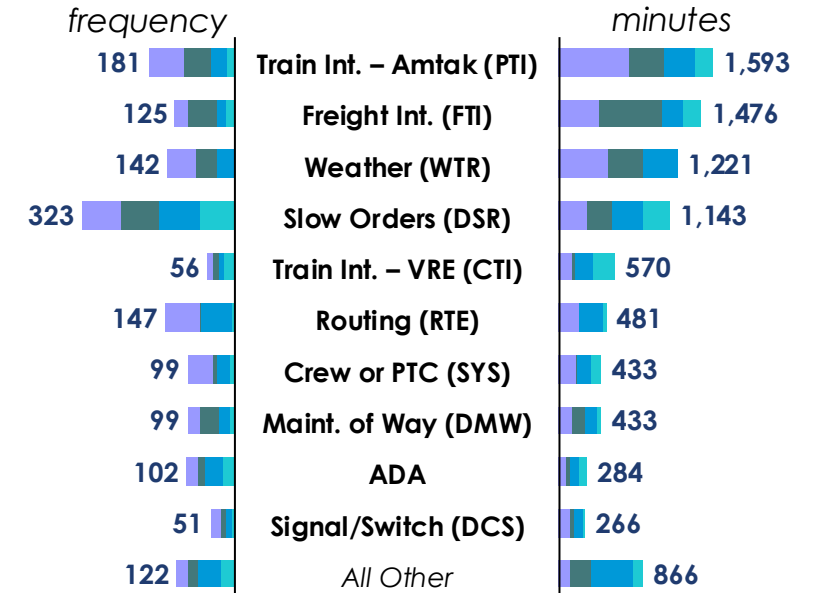
## Long Distance All-Station OTP v. Delay Minutes (RF&P Corridor Only)<sup>1,2,3,4</sup>



## All-Station<sup>1</sup> On-Time Performance, April 2026



## Top 10 Delays<sup>2</sup>, April 2026

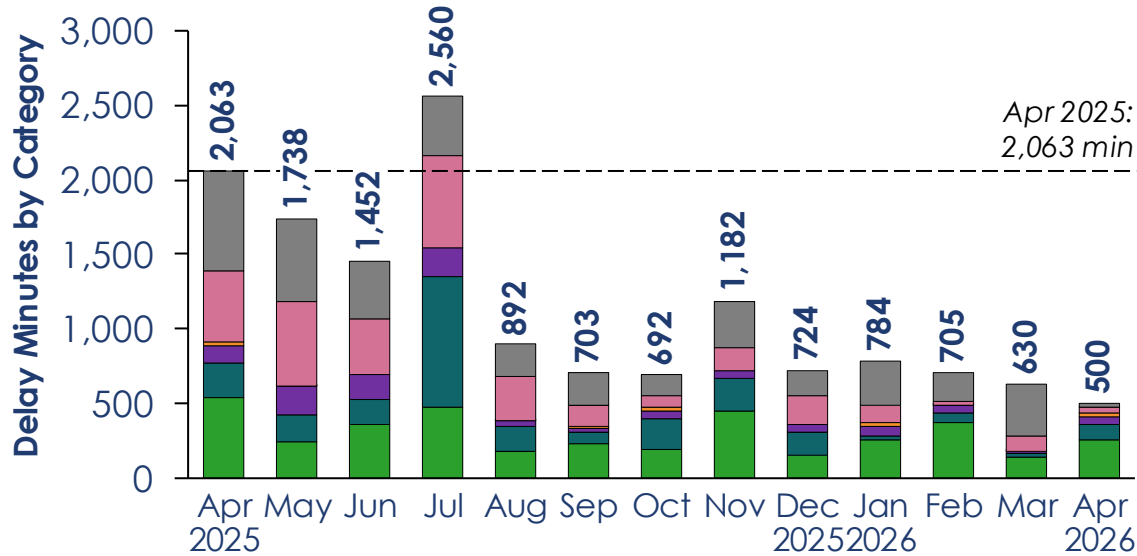


(1) OTP excludes OTP on NS Roanoke Corridor and stations outside VA/DC (2) Delay minutes exclude NOD and all delays on NS

(3) Long distance trains include Carolinian, Palmetto, Floridian, and Silver Meteor (4) Trains 40, 41, 92, and 98 are shown based on the day they operated in Virginia.

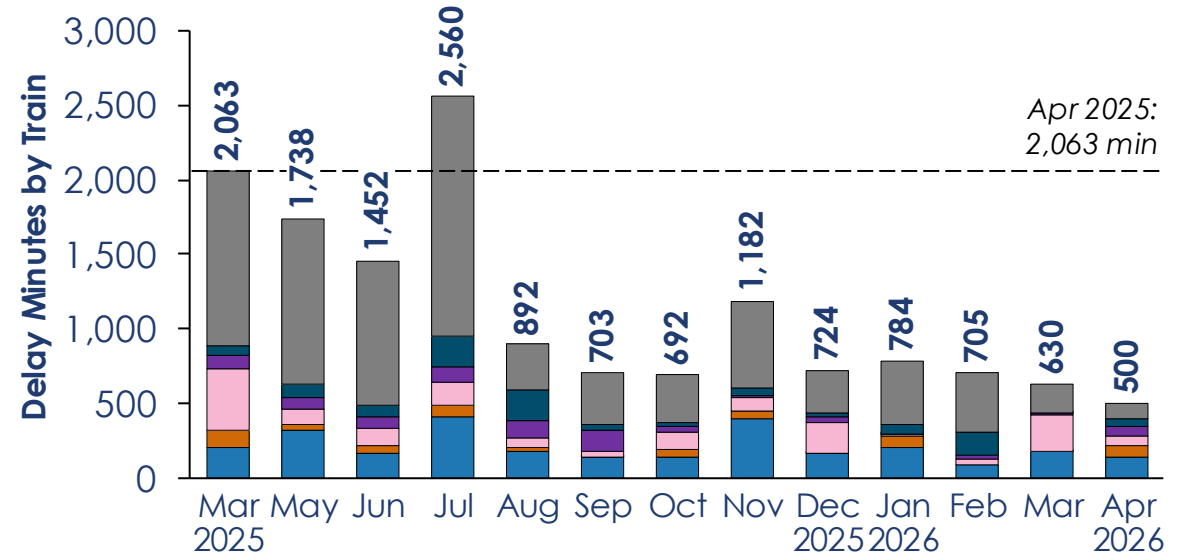
# Southbound delay minutes at Washington Union Station continue to improve, down 21% from March and down 76% year-over-year

### Top 5 SB Delay Categories at WAS by Month<sup>1</sup>



- Apr 2026 Top 5
- 1. **ENG** Mechanical (Locomotive)
  - 2. **SYS** Crew or PTC Delay
  - 3. **CAR** Mechanical (Coach)
  - 4. **RTE** Routing
  - 5. **SVS** Servicing
  - All Other Delays**

### Top 5 SB Delayed Trains at WAS by Month<sup>1</sup>



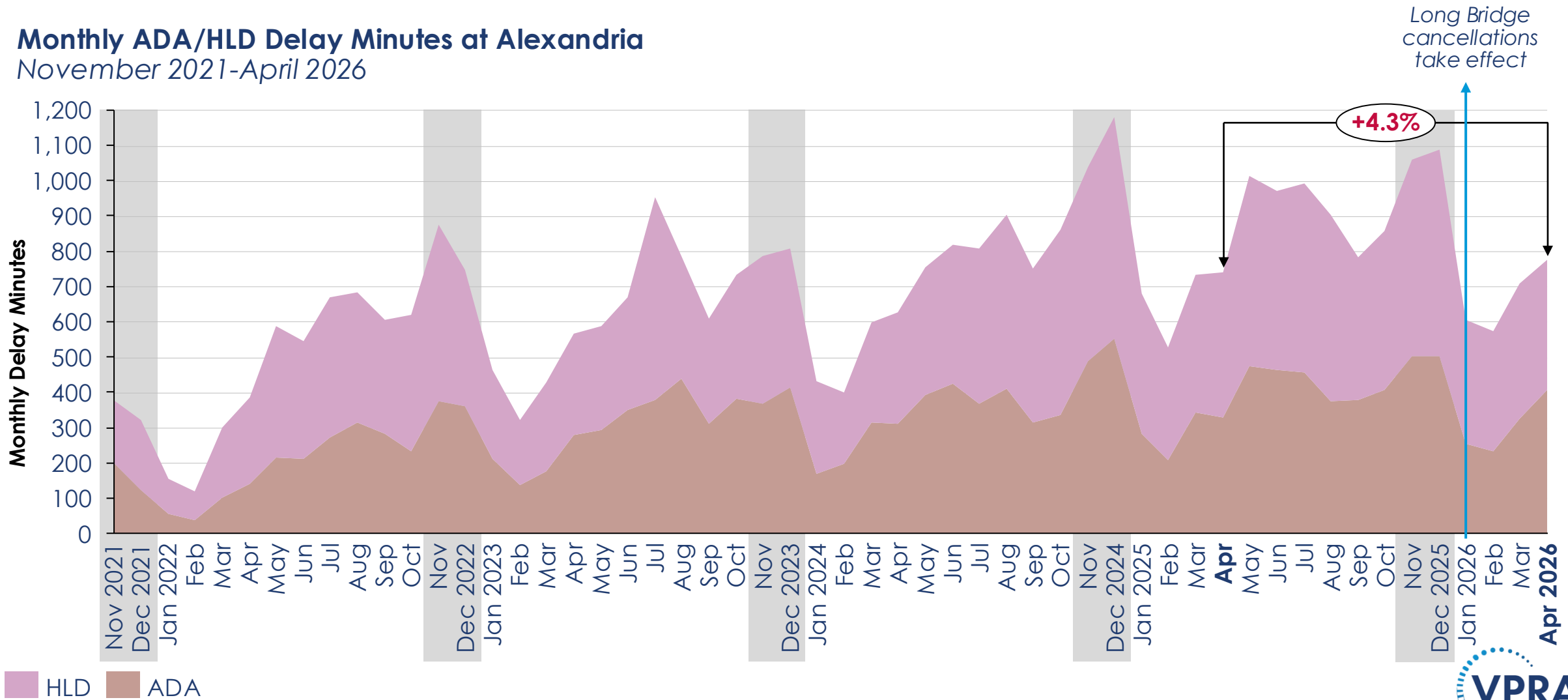
- Apr 2026 Top 5
- 1. **41** **Floridian** Southbound to MIA
  - 2. **93** **Northeast Regional** Southbound to NFK (M-F)
  - 3. **97** **Silver Meteor** Southbound to MIA
  - 4. **95** **Northeast Regional** Southbound to NFK (M-F)
  - 5. **151** **Northeast Regional** Southbound to RNK (Daily)
  - All Other Trains**

(1) Excludes NOD and delays on the *Cardinal* and *Crescent*



# Passenger/ADA delay minutes at ALX continue to increase both month-over-month and year-over-year

Monthly ADA/HLD Delay Minutes at Alexandria  
November 2021-April 2026



# Alexandria Station Construction



King & Commonwealth Bridges

Alexandria Station Temporary Platform

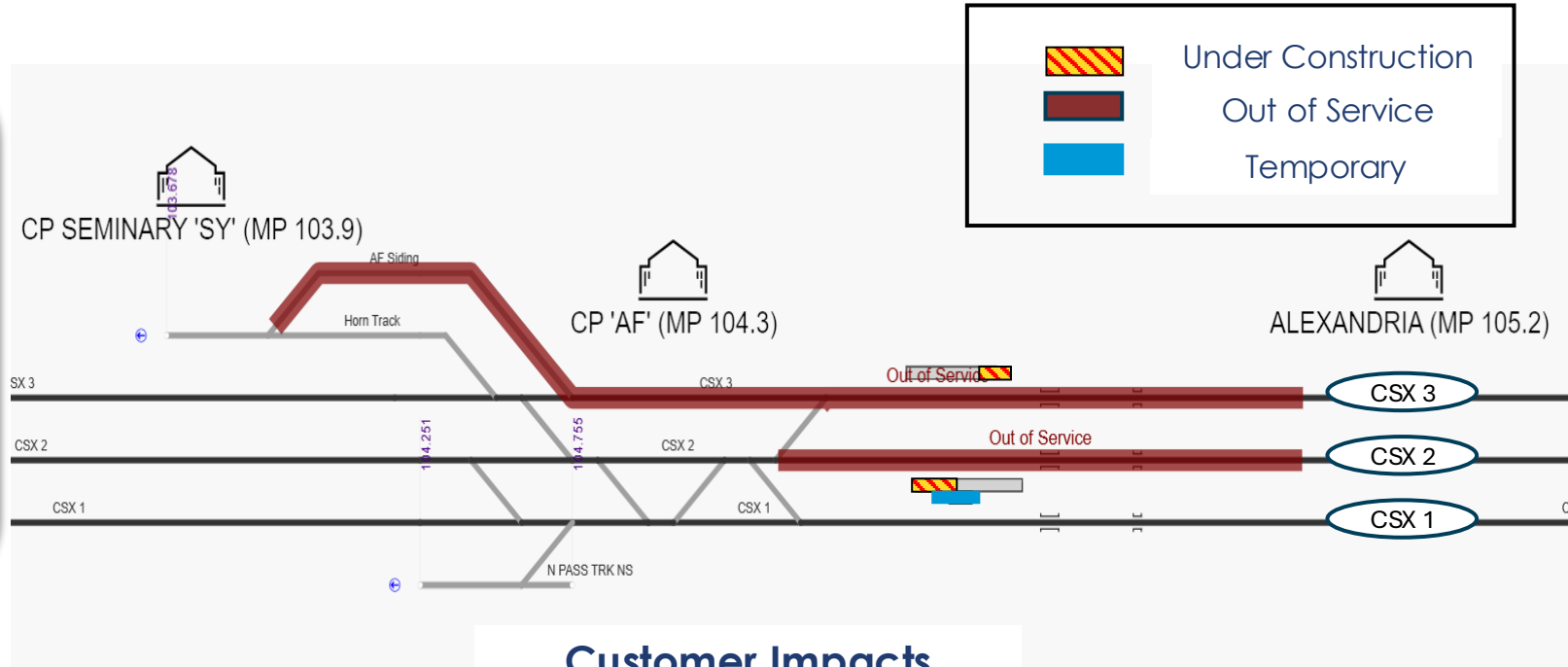
# Phase 2: Friday May 1 (evening) – Wednesday May 6 (afternoon)

## Construction Activities

- Track 3 out of service (OOS)
- Track 2 out of service (OOS)
- Saturday & Sunday, May 3 & 4 (6-7 hours during daytime)
- Work zones on north end of ALX Platform (TK3) and south end of center platform

Concurrent work:

- Alexandria Fourth Track – Phase 1 Construction (thru 6/14/2026)



## Customer Impacts Dictionary

- Travel Time
- Dwell times
- Train interference
- Passenger Impact
- Operator coordination

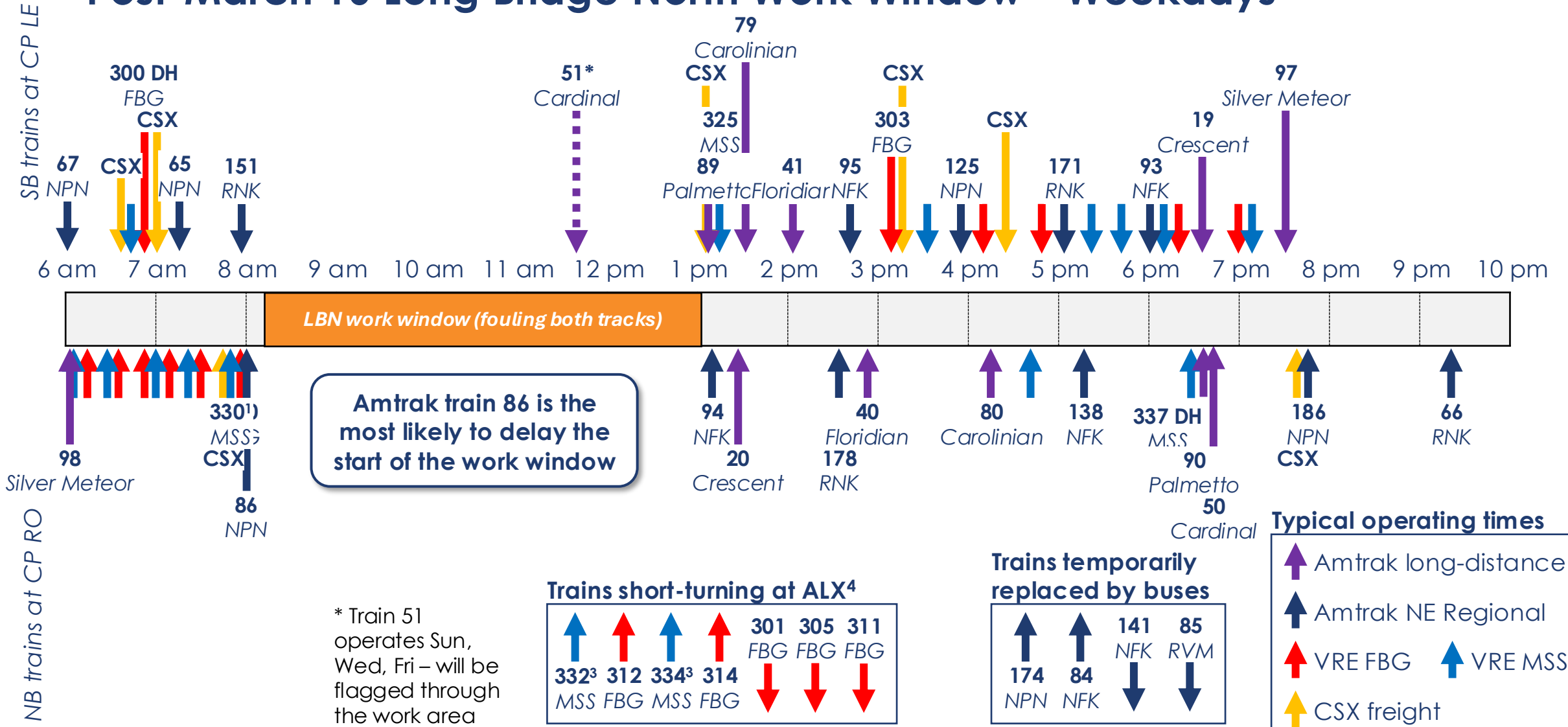
## Customer Impacts

- Notice and coordination required:** Passengers can only board on temporary platform on Sunday Morning.
- Potential for increased dwell times due to boarding on shorter temporary platform, reducing the number of doors available for boarding. Potential passenger congestion.
- Clarification needed:** Confirm the start/end time of Track 2 outage to assess potential train interference for Trains 98, 65, 151, 164.





# Post-March 16 Long Bridge North Work Window - Weekdays



# Long Bridge North – Work Window Utilization



Micropile Installation at Maine Ave. Abut. B



Drilled Shaft Installation at Retaining Wall L

# Long Bridge North – Work Window Utilization



Ohio Dr. Bridge Support Of Excavation Pile



Trestle Construction at Washington Channel

# DC Noise Variance

- Seeking Letter of Support from 6D01 Advisory Neighborhood Commission (ANC)
- ANC support needed for Department of Building After-Hours Permit
- After-Hours Permit will not eliminate need for day-time work window, will help preserve current schedule

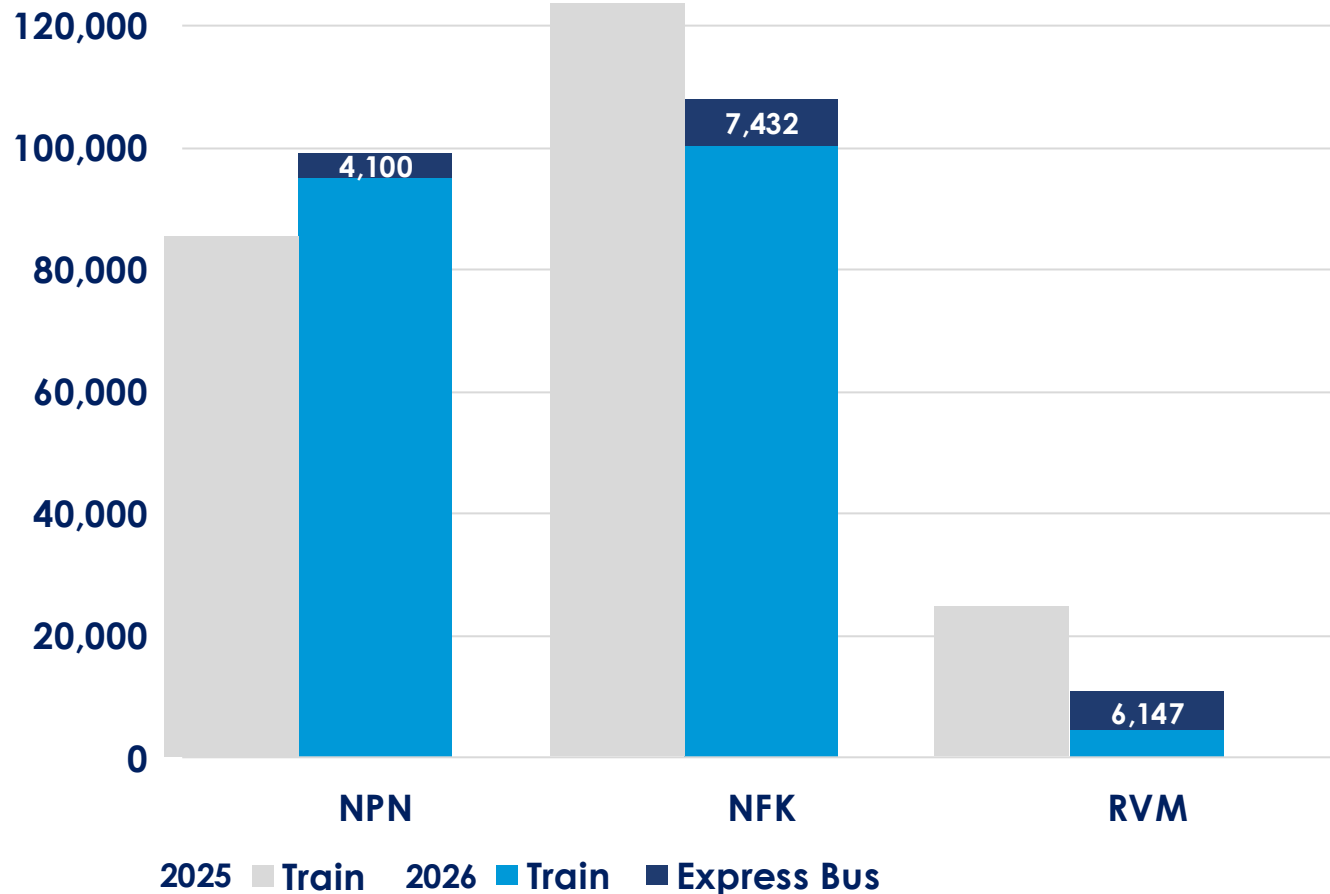


**Travel patterns are shifting, but demand remains strong...**



# Service Mitigation Measure – Bus Service

January to April\* 2026 Ridership

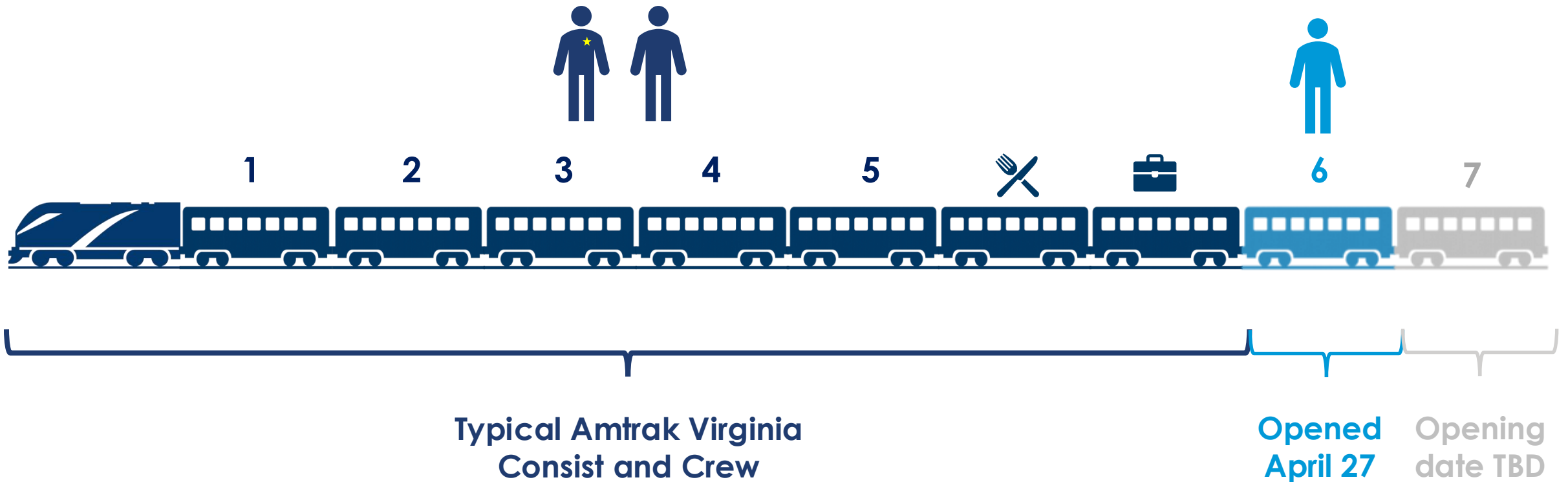


\*Preliminary April data

## Hampton Roads and Richmond Amtrak Connection Bus Service



# Service Mitigation Measure – Capacity




# Amtrak Virginia is the Official Travel Partner of VA250



**YOU'RE A TRAIN RIDE AWAY FROM THE COUNTRY'S AHA MOMENTS.**

VIRGINIA'S STORY IS AMERICA'S STORY. SEE IT WITH AMTRAK VIRGINIA.


VA250 AMTRAK



**IT'S AMERICA'S BIRTHDAY PARTY. WANT A RIDE?**

BOOK NOW FOR ALEXANDRIA'S JULY 4TH CELEBRATION.

VA250 AMTRAK



**FOR VA250. AMERICA, THE COMFORTABLE.**

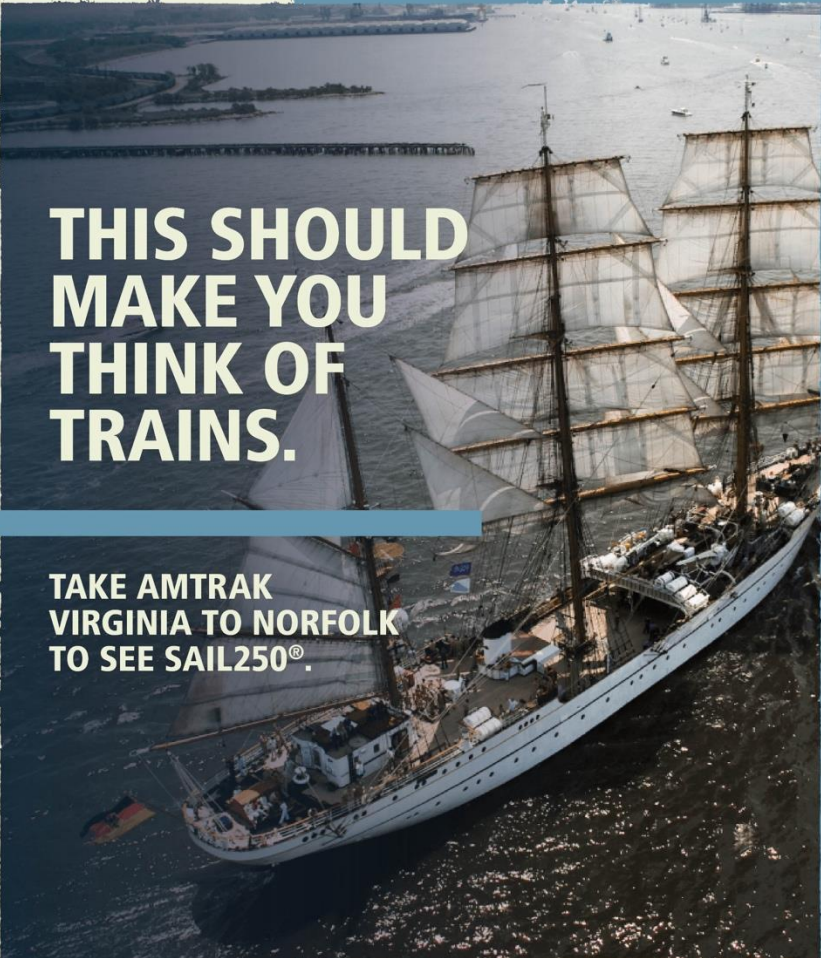
SEE HISTORY STRESS-FREE WITH AMTRAK VIRGINIA.

VA250 AMTRAK

A gateway to historic celebrations




# Sail250 Coming to Norfolk June 19-23



**THIS SHOULD  
MAKE YOU  
THINK OF  
TRAINS.**

**TAKE AMTRAK  
VIRGINIA TO NORFOLK  
TO SEE SAIL250®.**

**VA250** 



**THE BRITISH  
ARE COMING!  
THE PORTUGUESE  
ARE COMING!  
THE PERUVIANS  
ARE COMING!**

**TAKE AMTRAK VA TO  
NORFOLK TO SEE 60+ SHIPS  
FROM ACROSS THE WORLD.**

**VA250** 



# THANK YOU

Questions?